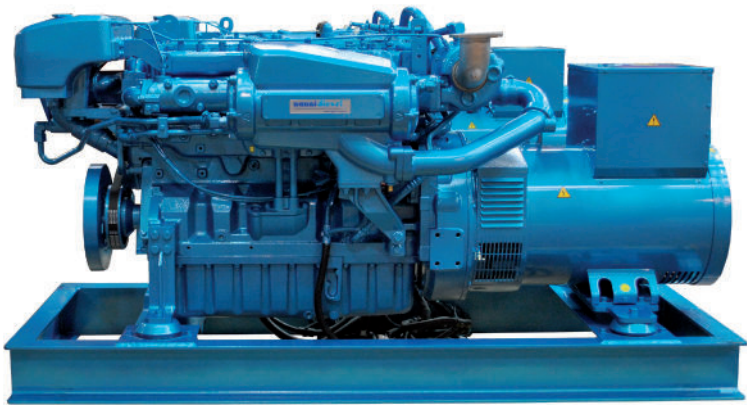


QLS102T

SPECIFICATIONS



Frequency	50 Hz
Voltage	400 V
Amperes	82.9 A continuous 118.4 A prime
Power according to iso 8528	57.4 kW continuous 82 kW prime
Protection	IP23
Insulation	Class H
Voltage accuracy	± 0.5%
Electromagnetic compatibility	EMC 2014/30/EU
Lenght	1798 mm
Width	809 mm
Height	1045 mm
Dry weight	1280 kg

Engine base	John Deere, mecanical engine
Cooling system	Seawater pump with rubber impeller
Closed cooling	Heat exchanger
Cylinders	6 in line
Start (cold temperature)	Glow plugs
Fuel consumption at full load	23.9l/h
Sea water pump connexion	50 mm
Fuel pump - Max suction height	std pump : 0.5 m with add. pump : 1.8 m
Engine operating angle	15° continuous 30° intermittent
Fuel connexion	10 mm
Class approval	Bureau Veritas

QLS102T

82 kW prime @1500 rpm

TECHNICAL DESCRIPTION

ENGINE BASE

- 4 stroke Diesel engine tested in all marine or industrial applications throughout the world.
- Replaceable wet-type cylinder liners giving an excellent heat dissipation for long life.

INJECTION AND COMBUSTION SYSTEM

- Proven and reliable Mechanical Governor
- High torque
- Mechanical injection

COOLING SYSTEM

- Cooling is ensured by heat exchange between coolant and seawater in an heat exchanger, or via a Keel Cooling system.
- Reduced external connections eliminates hoses and fittings that can leak or break.
- Cooler and quieter environment for vessel and crew.
- Seawater pump with rubber impeller.

GENERATOR

- 50 Hz : delivering a continuous power of 57.4 kW and able to provide up to 82 kW
- IP23 protection

STANDARD EQUIPMENT

- Closed cooling with heat exchanger
- Water-cooled manifold
- Baseframe
- Flexible mountings (dampers)
- Oil drain pump mounted on the engine
- Luxe GE panel

OPTIONAL EQUIPMENT

- Seawater hoses
- Seawater filter
- Siphon breaker
- 24V Two-pole electrical system
- Dual shield fuel feed system piping
- Leakproof injection piping
- Exhaust system
- Fuel prefilter
- Keel Cooling version
- Wet or dry exhaust
- Engine heater
- Exhaust compensator
- Heating elements in generator
- Generator prepared parallel installation
- Double fuel lines
- BV type approval

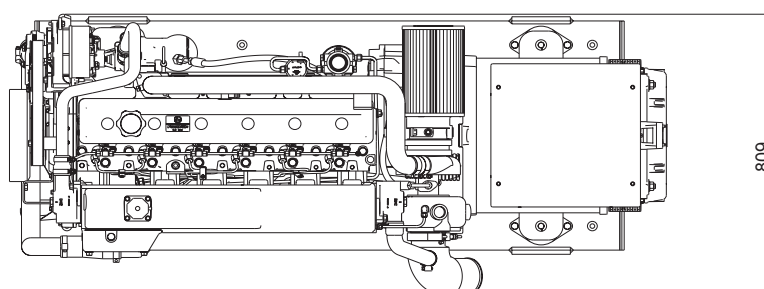
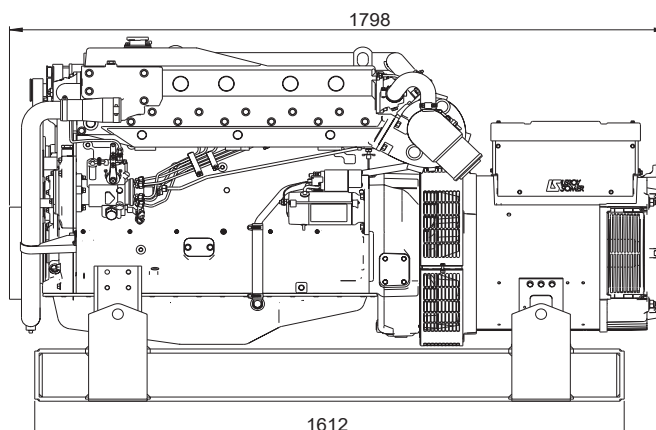
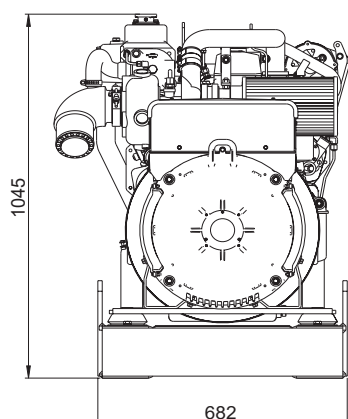
INSTRUMENT PANEL

LUXE GE



- Start and stop buttons
- Low oil pressure warning light
- Coolant temperature warning light
- Preheat warning light
- Battery charge warning light
- Oil pressure indicator
- Coolant temperature indicator

DIMENSIONS (mm)



NANNI INDUSTRIES S.A.S.

11, Avenue Mariotte - Zone Industrielle
33260 La Teste - France
Tel: +33 (0)5 56 22 30 60
Fax: +33 (0)5 56 22 30 79

Technical data according to ISO 8528. This document is not contractual. Nanni reserves the right to modify any of the characteristics stated in this document without notice, in a constant effort to improve the quality of its products. Images and illustrations may shown non standard equipments. All combination of equipment & accessory are not available.

DGBXXC01169A