

# SI-4.3

## SPECIFICATIONS



The SI-4 .3 Nanni interactive control display is the ultimate solution for all Nanni engines situations. This State of the Art high tech display will be the perfect match to vessels of all sizes and will provide all engine parameters in a glimpse of an eye. Easy to use simple menus will display all sensitive informations such as : rated speed, temperatures, oil pressure, level of remaining fuel, instant and average fuel consumption, batteries status, rudder angle, engine history, hourly counter, next engine service, DTC codes.



### DESIGN

Timeless  
Easy to integrate  
Backlighting  
Compact



### END-USER EXPERIENCE

Customizable  
Language-independent icons  
Functional

# SI-4.3

## ELECTRONIC CONTROL DISPLAY

### TECHNICAL DESCRIPTION

#### MAIN CHARACTERISTICS

- Aluminum alloy case
- 4.3 TFT 480x272-24 bits/16 Mcolors display
- Mineral glass
- IPX7 waterproof unit
- CAN inputs (NMEA 2000 & SAE J1939)
- Operating temperature : -40 to + 70 °C
- High visibility in all lighting conditions
- Selectable display (up to 10 pages)
- D.C. power supply 12 or 24 Volts
- Operation from 9 to 32 Volts

#### DISPLAYED DATA\*

- Engine speed
- Trim
- Air inlet pressure
- Coolant temperature
- Battery voltage
- Fuel consumption
- Engine oil temperature
- Engine oil pressure
- Engine operating hours
- Rudder angle
- Depth under sounder
- Fuel level
- Fresh water level
- Waste water level
- Seawater temperature
- North direction (COG)
- Direction
- Wind angle AWA
- Apparent wind speed AWS
- Speed over water STW
- True ground speed SOG

\* According to sensors not supplied

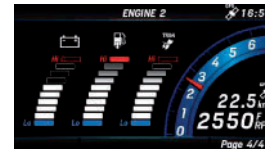
#### ALARMS

- Water depth
- High wind
- Battery voltage too low
- Battery temperature too high
- Battery state of charge
- Coolant temp high
- Engine temp high
- Engine oil pressure low
- Exhaust temperature high
- Low fuel level
- Fresh water level low
- High brackish water level
- Minimum rpm threshold to trigger engine alarms

#### DIMENSIONS

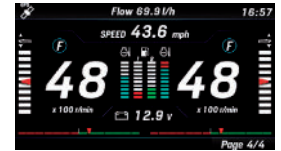
- Unit installed on standard A4 Nanni panel: 205 x 120 mm [8.07 x 4.72 in].

### CONFIGURABLE SCREENS - EXAMPLES



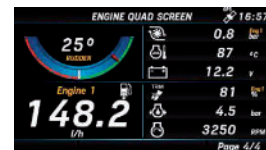
SINGLE ENGINE

TWIN ENGINE



SIMPLIFIED DISPLAY

TRIPLE DISPLAY :  
3 SCREENS  
3 TO 9 DATA

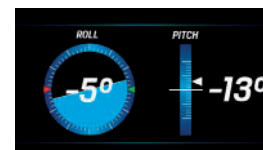
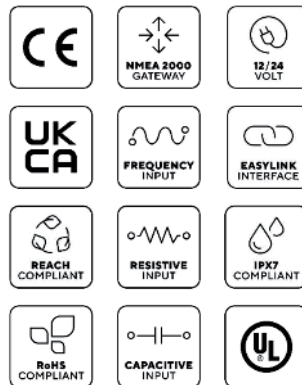
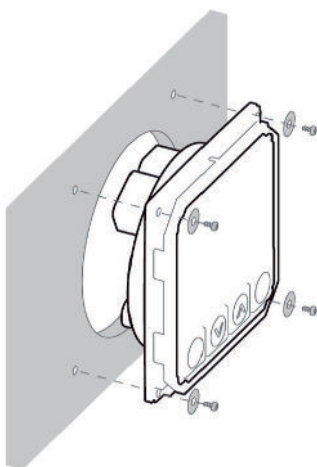


QUAD DISPLAY:  
4 SCREENS  
4 TO 12 DATA

TRUE WIND AND APPARENT  
6 DATA FIELDS  
POSSIBLE

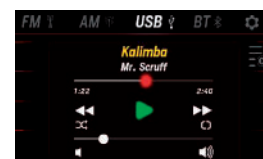
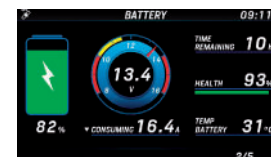


### SI-4.3 ASSEMBLY



PITCHING AND ROLL  
DEPENDENT ON  
INFO  
SENSOR

INTELLIGENT  
BATTERY  
MANAGING  
SYSTEM



RADIO &  
U.S.B  
MEDIA